

How to access mfs-Cluster: a short guide

Joachim Benz

today

1 Prepare your firewall

The ports 22(ssh) and 113(auth) should be open. That is a necessary precondition that your viewer is starting and working correctly.

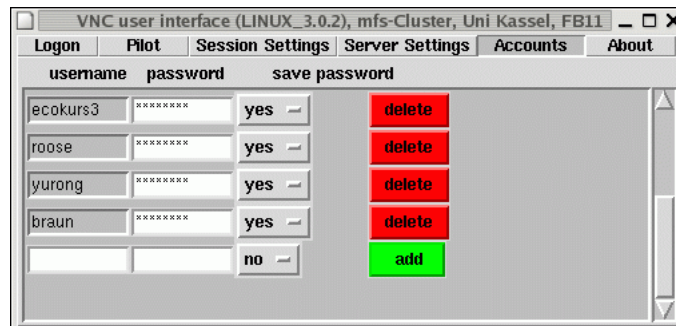
If your local system is running under WINDOWS XP

- open *Windows Firewall*,
- select *Exceptions*,
- open *Add Port ...*

and enter these two ports mentioned above.

2 First steps to setup a connection

Start the viewer (usually called *cluster* or *happy grouse*) and click on the page accounts.



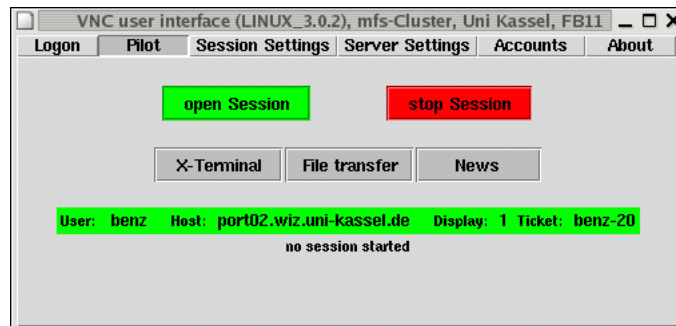
Enter your account name and the password into the last line of the list. Select *yes* if the password should be remembered, otherwise *no*. Finally click the button *add*.

MFS-Viewer will switch to the logon page.



Now you select the account you want to use from the list of accounts (double click). Afterward press the green button *connect*.

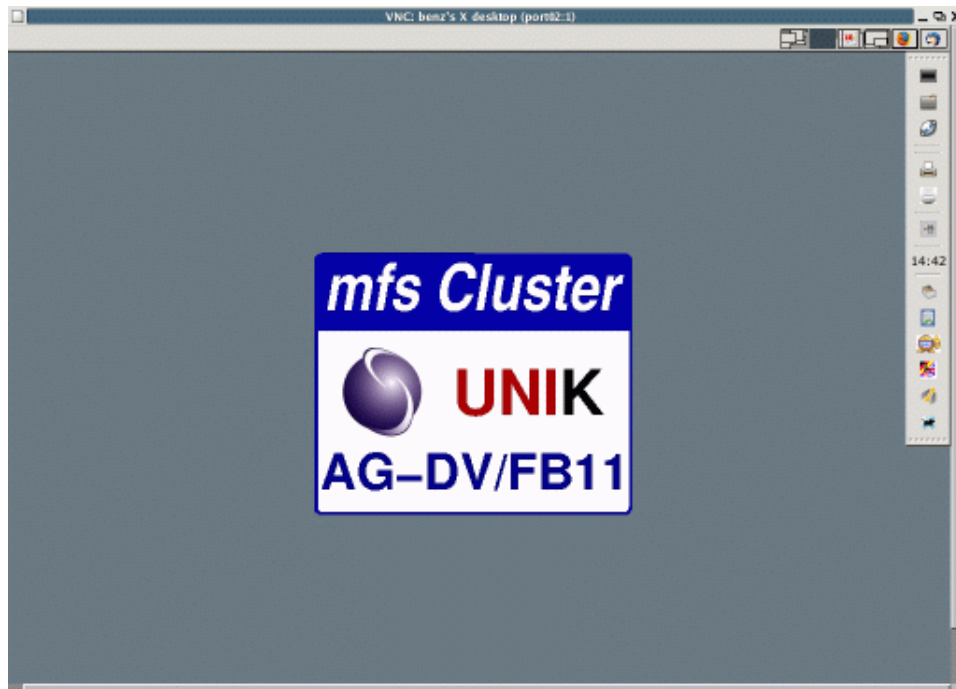
MFS-Viewer will switch to the pilot page.



If everything is okay, the last but one line shows either *connected* or more detailed as it is shown in the figure above. If you get *not connected*, something is going wrong with your network connection.

X-Terminal will open a console at mfs-Cluster, where you can enter commands in the command line mode (that is not very useful, but a good way to check if the connections is working correctly).

Usually you click *open Session*. After some seconds the viewer will open on your screen and you have access to the desktop at mfs-Cluster.



Congratulation! you succeeded and now you have full access to all applications and software, which is available at mfs-Cluster.

But not always it is so easy because it depends strongly on your local configuration (operating system and network connection).

3 Trouble shooting

Sometimes your happy grouse will get angry (yellow error/problem messages)!

The first time you try to access mfs-Cluster it's not surprising that happy grouse get angry. Cannot find the file with your personal settings (don't care of this, next time it will be better). Also it is necessary to setup RSA-keys because communication is based on ssh. Just do what you are asked to do.

If MFS-Viewer

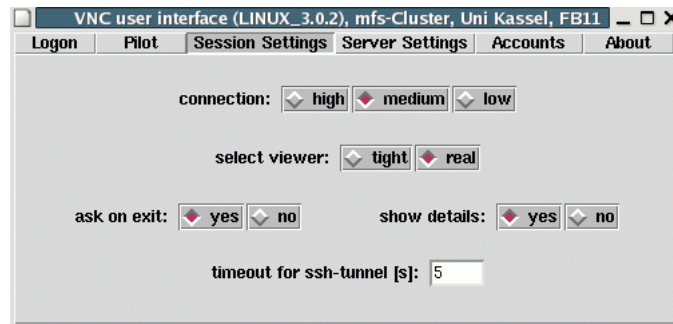
- will not switch from login page to pilot page after you clicked connect button or
- you get on pilot page the message not connected or
- viewer will not start,

then the situation is more serious.

Check your network and your firewall settings (see chapter 1)

You entered the your password correctly (it is case sensitive)?

Some things you can change on page *Session Settings*



If your connection is LAN (10Mb or more) select connection high. With (A)DSL we propose medium.

Some viewers are not running under some versions of WINDOWS (NT, Windows2000). With Windows version of MFS-Viewer you can select between ultra, tight and real. From our experiences tight is the fastest viewer, but less comfortable as the other viewers, in particular if you have low bandwidth network connection.

Select *show details* yes, if you have problems with connection and try to increase the timeout.

In case all these doesn't help to establish the connection and to see the mfs-desktop, the situation is not hopeless but difficult. Please contact me (benz@mail.wiz.uni-kassel.de) and describe the problem as detailed as possible. If you write only '*it doesn't work*' I cannot help you!